



FIRST FOCUS
CAMPAIGN FOR CHILDREN

Webinar: How New Data Shows Us the Pathway for Ending Child Poverty

Tuesday, September 28, 2021

How New Data Shows the Pathway for Ending Child Poverty

Child Poverty Action Group & First Focus
September 2021

Megan A. Curran



Poverty Measures: US Census Bureau



Official Measure

(OPM
)

2016 Official Poverty Thresholds
(Two Adults and Two Children)



For 2020: \$26,246



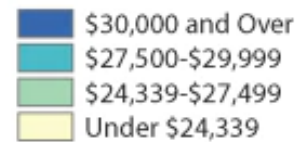
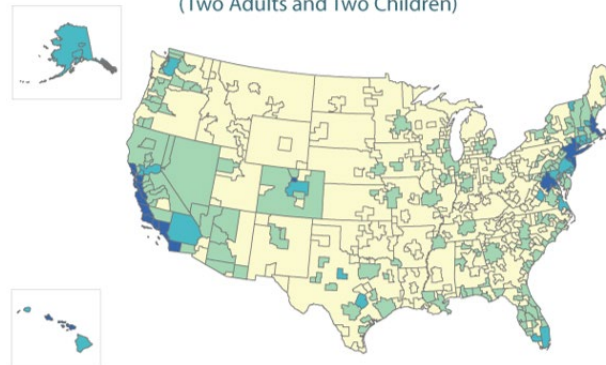
The official measure uses cash income, such as wages and salaries, Social Security benefits, interest, dividends, pension, or other retirement income.



Supplemental Measure

(SPM)

2016 SPM Poverty Thresholds for Renters
(Two Adults and Two Children)



For 2020 (nat'l avg): \$30,150

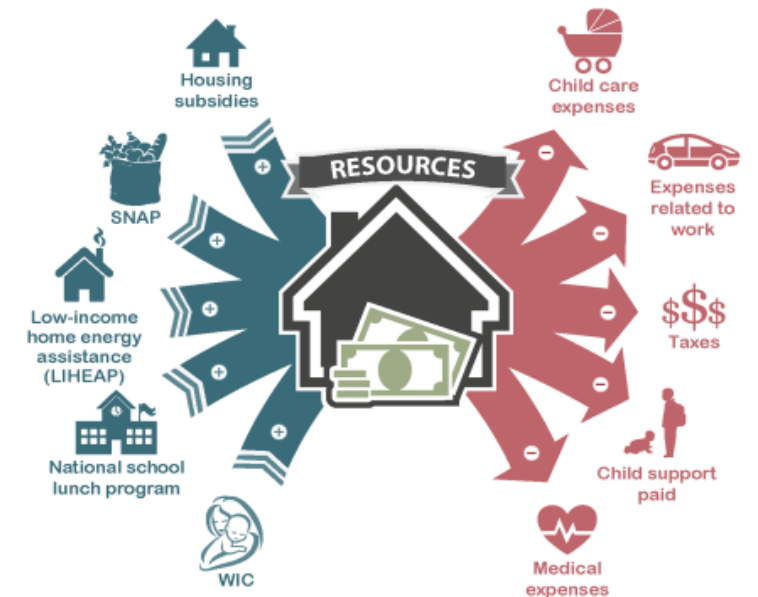
The SPM starts with cash income, then...

ADDING BENEFITS

The SPM adds benefits from the government that are not cash but help families meet their basic needs.

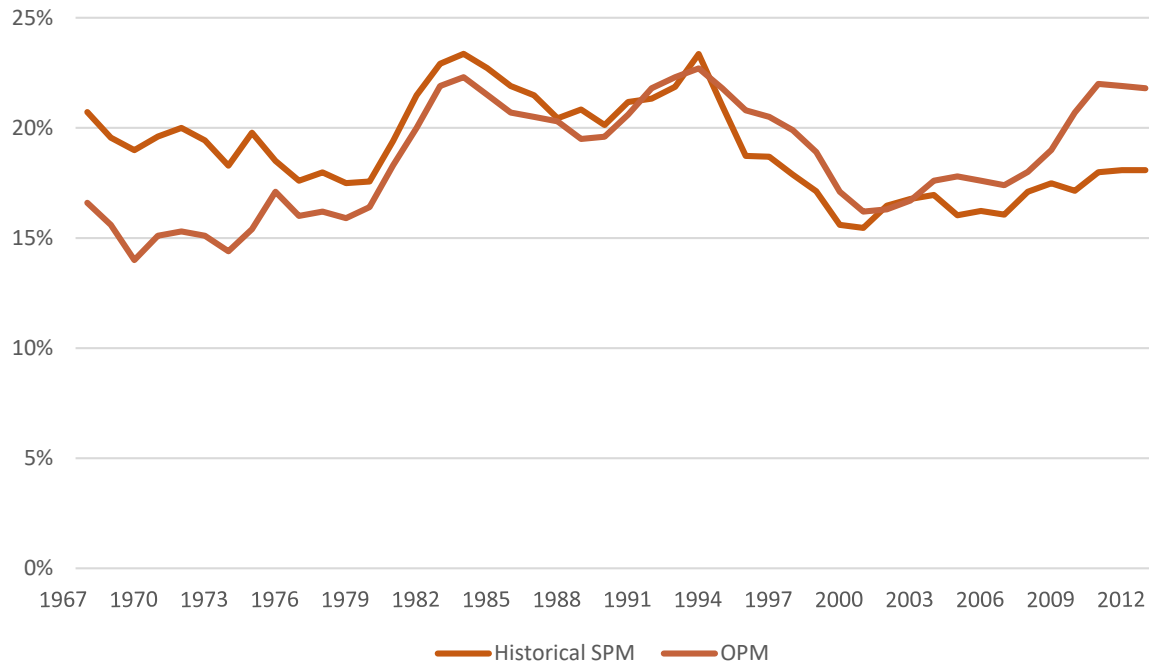
SUBTRACTING EXPENSES

The SPM subtracts necessary expenses like taxes, health care, commuting costs for all workers, and child care expenses while parents work.



Child Poverty Trends: OPM vs. SPM

OPM vs. SPM Child Poverty Rates:
1967 to 2012



Access our historical SPM data back to 1967 at povertycenter.columbia.edu/historical-spm-data-reg

OPM vs. SPM Child Poverty
Rates: 2009 to 2020

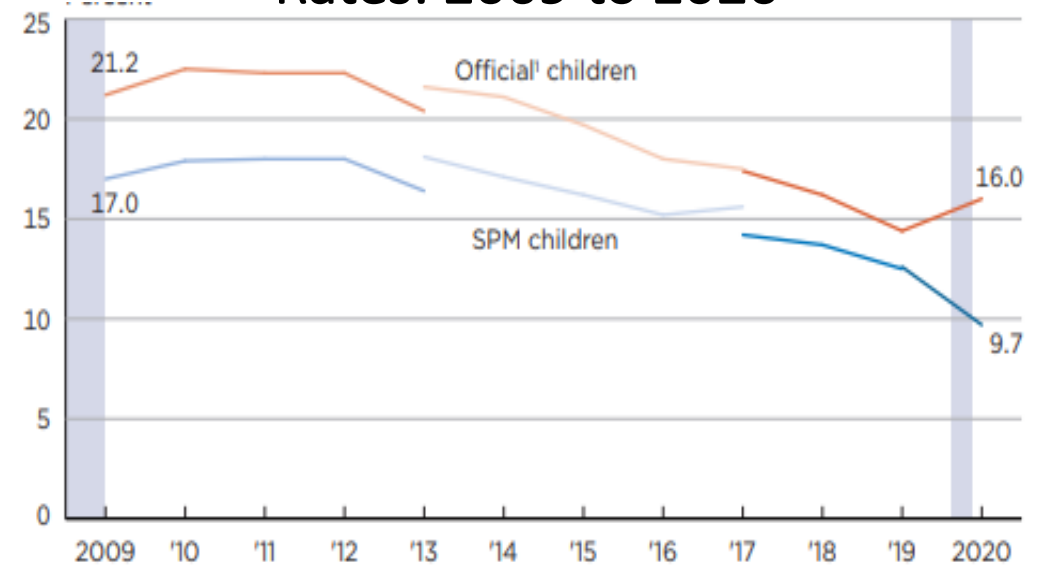


Image from [pg. 8 of Census Bureau 2020 SPM report](#)

SPM Child Poverty in 2020

2.2 million ***fewer*** children living in SPM poverty in 2020 than in 2019

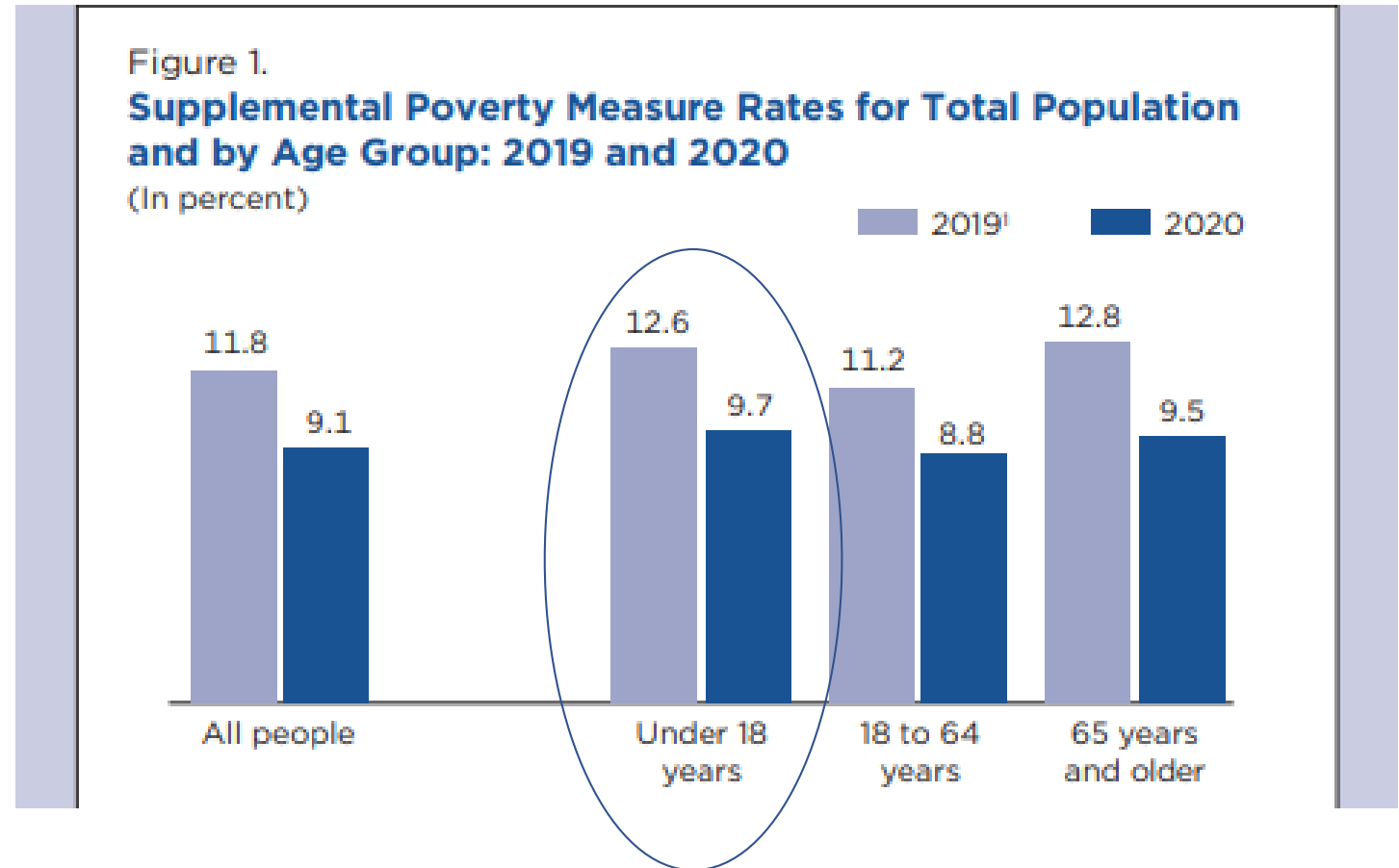
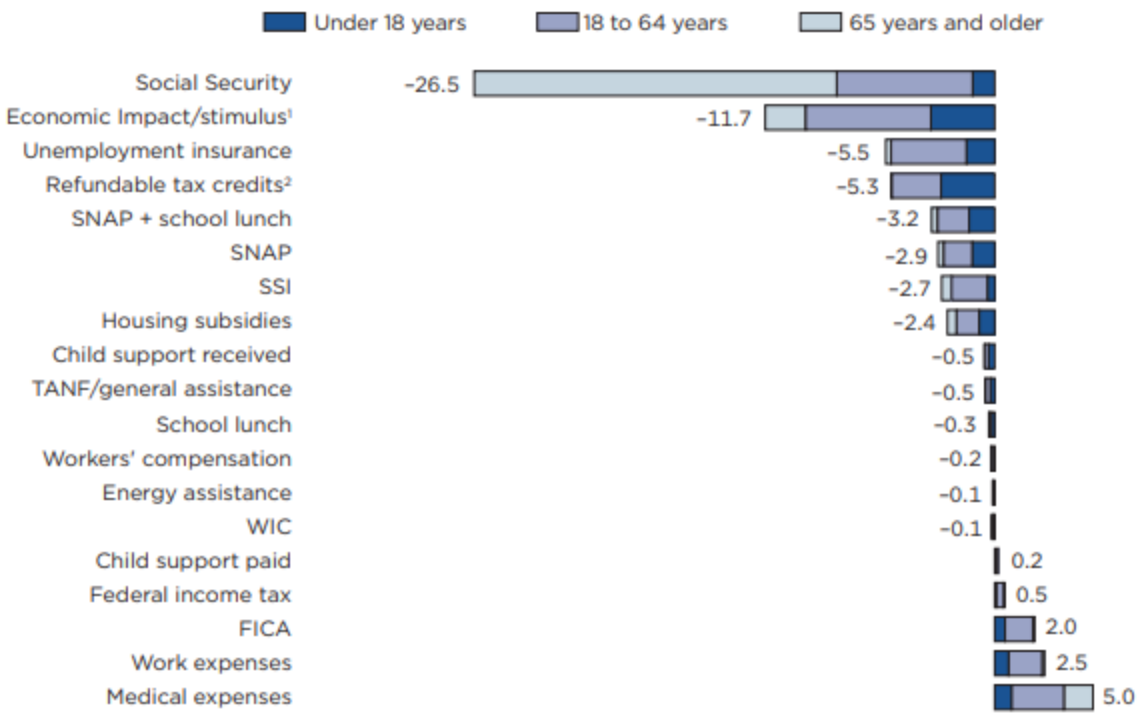


Image and data from [pg. 1 of Census Bureau 2020 SPM report](#)

Policies and Programs Counted in 2020 SPM

Change in Number of People in Poverty After Including Each Element: 2020
(In millions)



¹ Includes the first two rounds of stimulus payments. Additional details available in the report appendix.
² Refundable tax credits do not include stimulus payments.
 Notes: SNAP: Supplemental Nutrition Assistance Program; SSI: Supplemental Security Income; TANF: Temporary Assistance for Needy Families; WIC: Special Supplemental Nutrition Program for Women, Infants, and Children; FICA: Federal Insurance Contributions Act. More information on confidentiality protection, sampling error, nonsampling error, and definitions is available at <<https://www2.census.gov/programs-surveys/cps/techdocs/cpsmar21.pdf>>.
 Source: U.S. Census Bureau, Current Population Survey, 2021 Annual Social and Economic Supplement (CPS ASEC).

Image and data from [pg. 12 of Census Bureau 2020 SPM report](#)

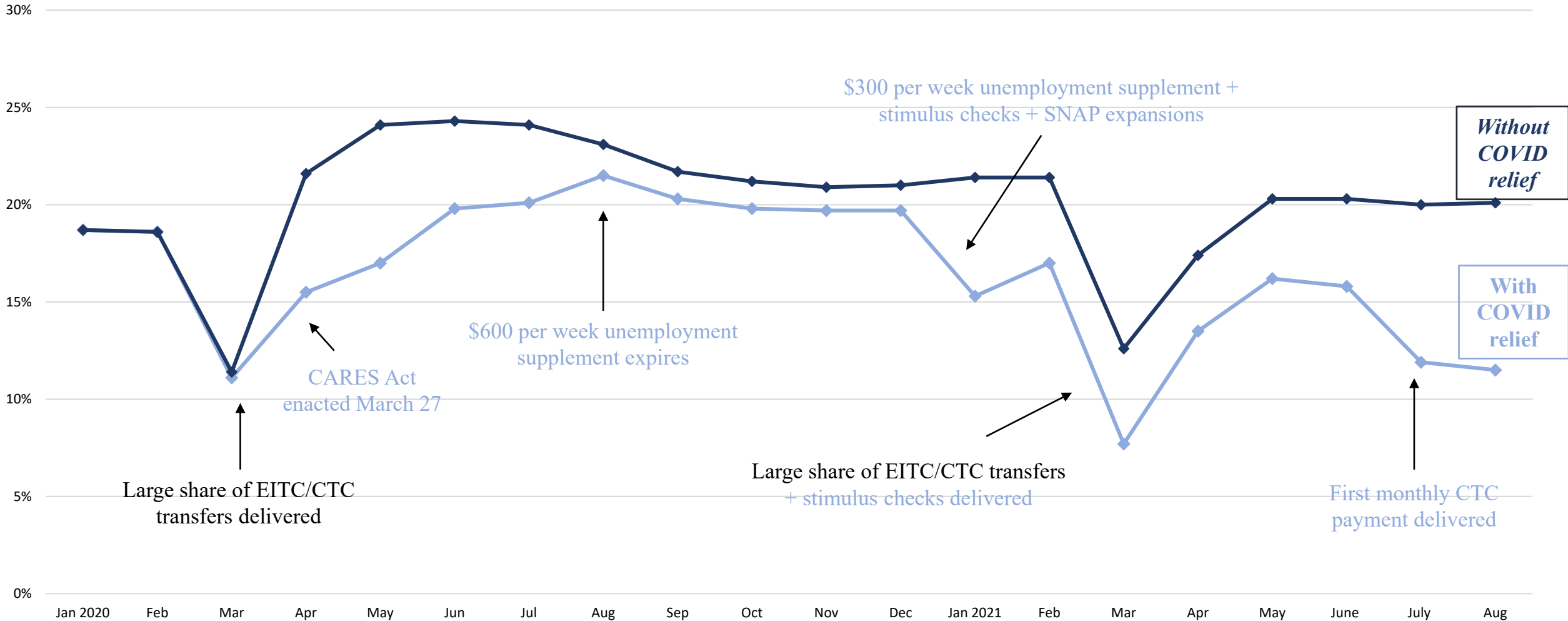
Examples of Policies Reflected in 2020 SPM Poverty:

- ✓ 1st two rounds of stimulus checks
- ✓ Expanded unemployment benefits (available in 2020)
- ✓ Pandemic-EBT (aggregated under SNAP or school lunch)
- ✓ SNAP, WIC, LIHEAP increases

Examples of Policies **NOT** Reflected in 2020 SPM Poverty:

- X 3rd round of stimulus checks (2021)
- X SNAP 15% benefit increase (2021)
- X Expanded unemployment benefits (available in 2021 – e.g. \$300/wk PUC)

Monthly Child Poverty Rates, US: January 2020 to August 2021



Based on: [Parolin, Curran, Matsudaira, Waldfogel, and Wimer \(2020\)](#)

Access all results at: <https://www.povertycenter.columbia.edu/forecasting-monthly-poverty-data>

Identifying Effects of Ongoing Relief

For Children



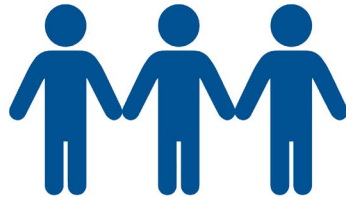
Anti-Poverty Policy Effects in July 2021

As the new monthly Child Tax Credit rolls-out, food hardship and child poverty drops.

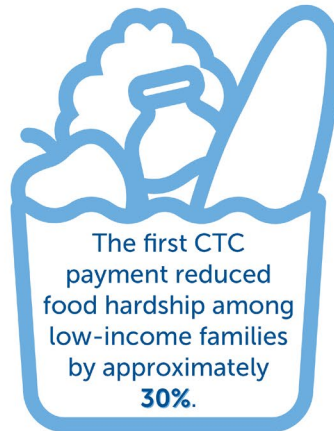
The overall monthly child poverty rate fell.

15.9%
JUNE 2021

11.9%
JULY 2021



The CTC kept **3 million children** from living in poverty in its first month alone.



The first CTC payment reduced food hardship among low-income families by approximately **30%**.



2nd CTC payment kept 3.5 million children from poverty in August

(500,000 more children than in July due to expanded coverage)



- Access our monthly poverty tracker (*updated regularly*) at: www.povertycenter.columbia.edu/forecasting-monthly-poverty-data
- View monthly poverty rates under three scenarios:
(1) pre-tax/transfer; (2) without COVID relief; or
(3) with COVID relief
- Find breakouts by **age** (*children; working age adults; seniors*) and **race and ethnicity** (*Asian, Black, Latino, White*)

Questions

?

Keep in touch!



Megan Curran
Policy Director



povertycenter.columbia.edu



cpsp@columbia.edu



[@cpsppoverty](https://twitter.com/cpsppoverty)

Join our email list for policy updates and information about upcoming policy seminars.



**END
CHILD
POVERTY**



FIRST FOCUS
CAMPAIGN FOR CHILDREN

Jacqueline Sealey
Parent of 3
Niagara Falls, NY
MomsRising Volunteer



FIRST FOCUS
CAMPAIGN FOR CHILDREN

Webinar: How New Data Shows Us the Pathway for Ending Child Poverty

Tuesday, September 28, 2021



**END
CHILD
POVERTY**



FIRST FOCUS
CAMPAIGN FOR CHILDREN

Thank you for joining us!

**Contact Cara Baldari at
carab@firstfocus.org with follow-up
questions**